



Collaborate With Schools!

Amy Villamagna, Ph.D.
Environmental Science & Policy; Sustainability Studies
Plymouth State University

Ina Ahern
Plymouth Regional High School
Plymouth Conservation Commission

WHY collaborate?

We can't do it all alone

Diversify experiences,
skillsets, and resources

Avoid fatigue

High School and College
students

Energetic

Tech Savvy

Entrepreneurial

Passionate

THE FUTURE!

In the beginning...

- Collaboration between the Plymouth Conservation Commission and Plymouth Regional High School and Plymouth State University gained traction ~ 4 years ago.



Ash Trees, Emerald Ash Borer, and Plymouth Fir...

A Story Map about fire risk in Plymouth, New Hampshire.



Deer Vs. Harsh NH Winters

Deer have a harsh time in NH winters. Many factors come into play, majorly snowfall and...



Plymouth Mountain Trails



Find a Solution, Stop Light Pollution

Light Pollution is a global problem that impacts many individuals, animals, and plant...



American Beech Bark Disease

We studied different types of issues that may effect the Plymouth, New Hampshire area. This particular project focused on the study..



The American Chestnut

A story of the past, present, and future of the American Chestnut tree.



I-Tree Eco/Canopy Showcase

This Project is for explaining the many uses of i-Tree.

PRHS Environmental Science 2018-2019 Final Projects

Plymouth Regional High School's collaboration with the Plymouth Conservation Commission began in the Fall of 2018 largely due to the efforts of Chris Buckley, a member of the PCC. Students in that year's class developed the Plymouth Conservation Commission website as well as a variety of other projects that are shared through the gallery below. The class presented their projects and the finished website at a meeting of the Commission on May 28, 2019 held in the Bobcat Cafe at PRHS

New collaborative ties...



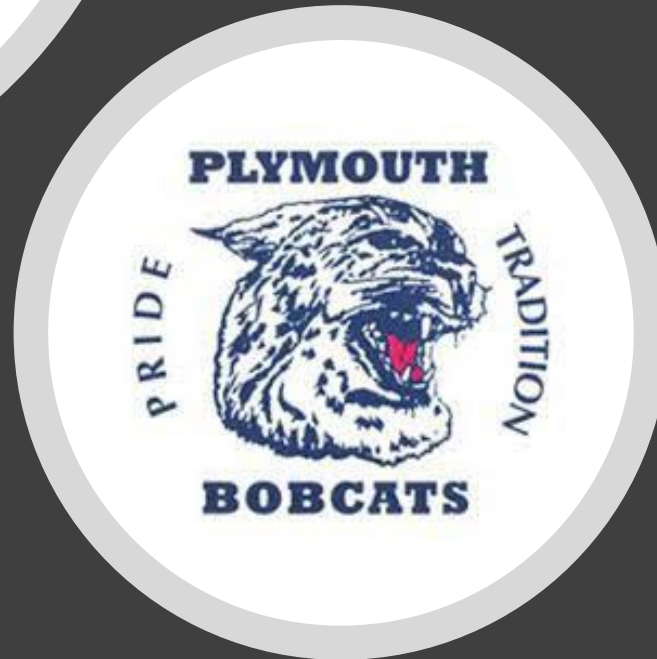
Community Conservation Cohort 2021-22

- Amy contacts TAFW Amanda Stone seeking opportunity to engage as an interested citizen
 - Biweekly workshops in Fall
- Plymouth Conservation Commission group identifies CCC project priorities





**TAKING ACTION
FOR WILDLIFE**



The stars align...

Plymouth Conservation Commission identified need for updated Natural Resource Inventory & a Trails Assessment scorecard/process

- NRI offered GIS learning and engagement opportunities for Plymouth Regional HS students
- NRI offered GIS and technical writing opportunities for PSU students
- Trails assessment framework and scorecard provided opportunity for students passionate about outdoor recreation to apply their scientific knowledge



Develop shared objectives and timeline

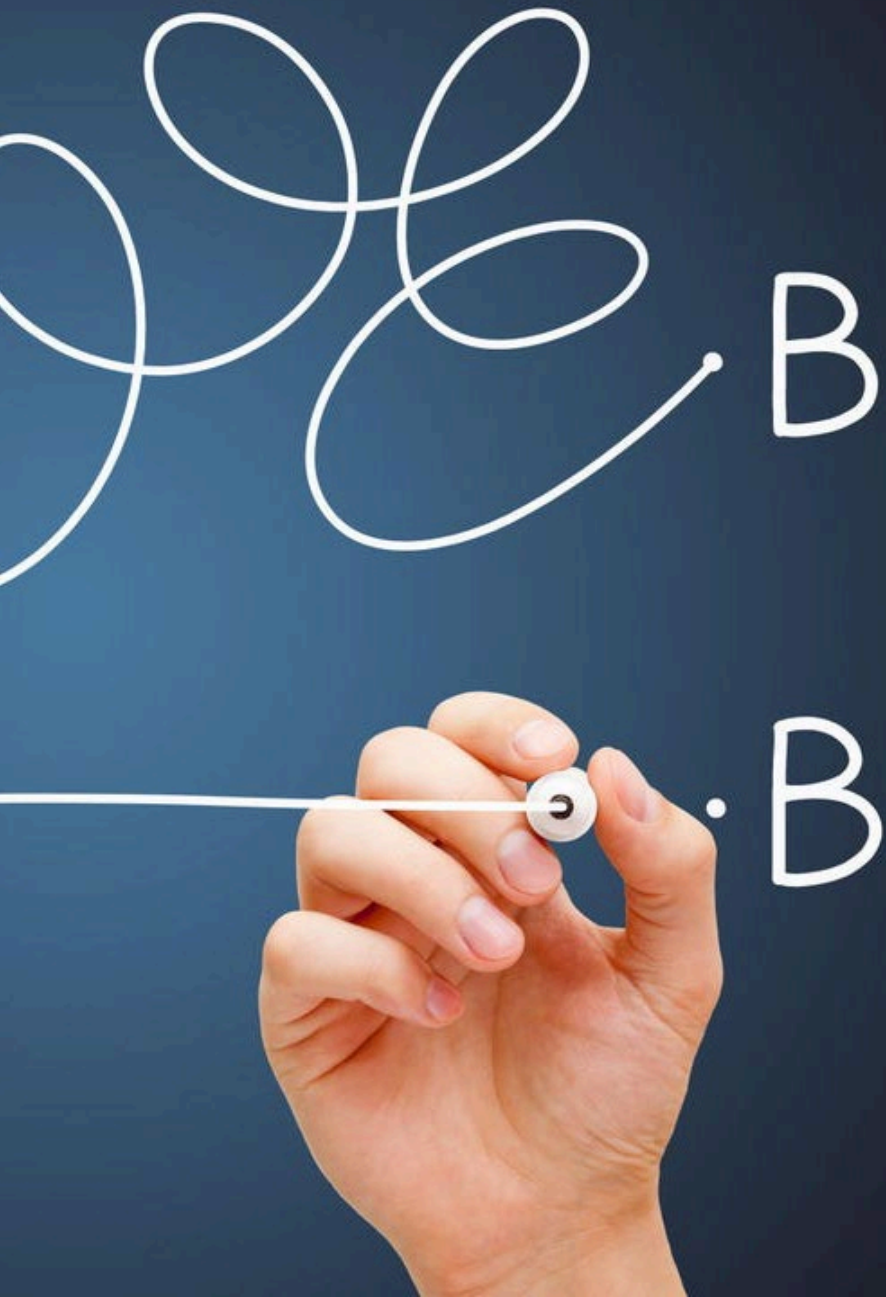
- **Be realistic -Time**
 - What are the priorities? Break into phases.
- **Be realistic – Knowledge & Experience**
 - Trade-offs: Free of cost, but some support is needed
- **Be realistic - Deliverables**



Avoid too many cooks...but avoid operating in a vacuum

Identify key roles

- Amy was advisor on Plymouth State University GIS and Writing Natural Resource Inventory (NRI)
- Ina was advisor on PRHS GIS NRI team
- Conservation Commission member and Amy co-advised PSU Trails Assessment team



Keep It Simple (KISS)

- **Avoid overcomplicating tasks**
 - Collaboration between teams (e.g. PRHS and PSU) was ideal, but very hard to schedule
- **Build resilience** – don't rely too heavily on single BIG meetings. Go for base hits rather than homeruns.
- **Be Adaptive**

Celebrate Collaboration SHARE & DISCUSS



The PCC would like to extend a warm welcome to all those visiting this enjoyment and benefit of the Plymouth community and the greater p spaces of the properties entrusted to us.

Here you will find not only trail descriptions and directions to the trail opportunities for volunteering in our mission of providing safe and e directly to the commission.

Plymouth Conservation Commission meetings are held at 7:00 pm on For further information or to receive the Zoom link, please email phys

We look forward to hearing from you and perhaps seeing you out on

Type here to search

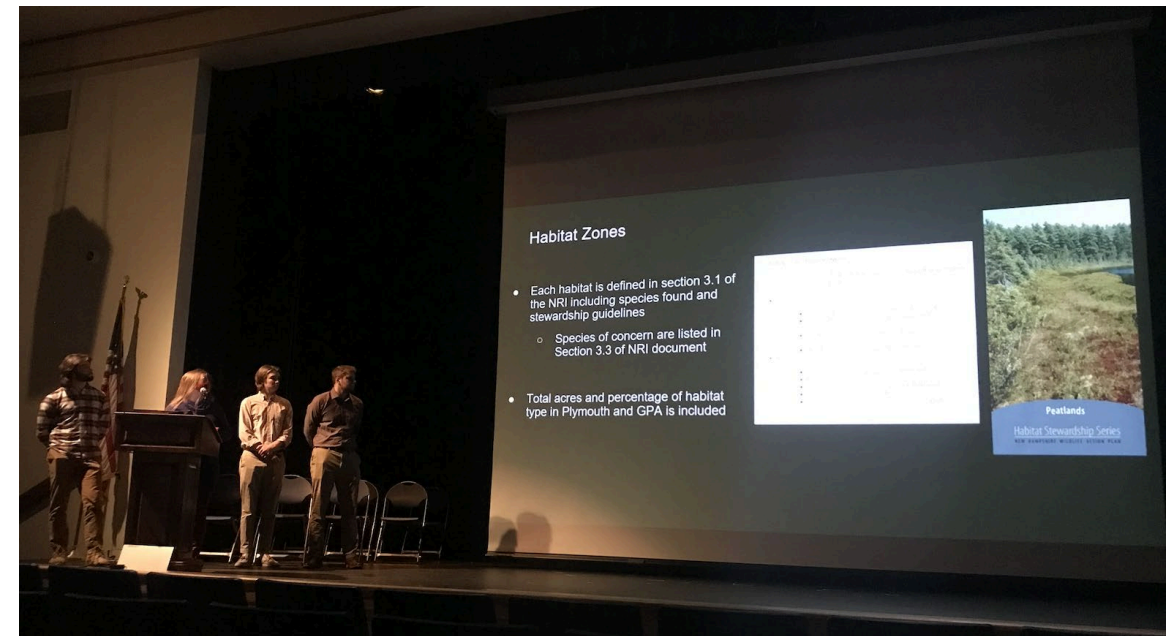
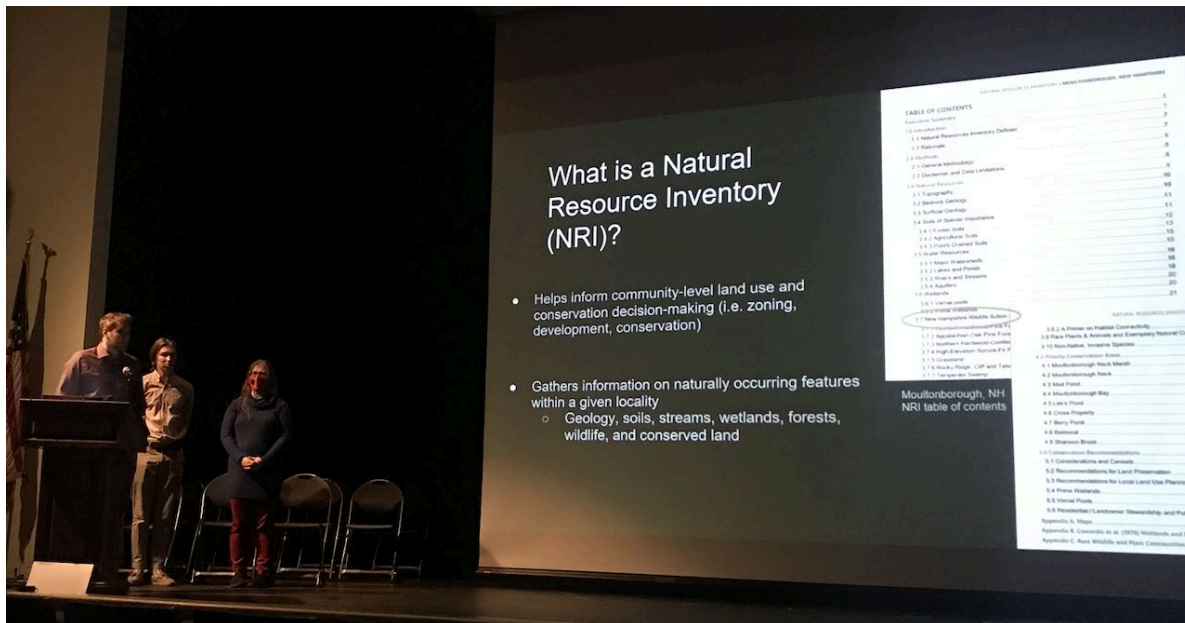


Let's Dive in and
Explore the Many
Products of
Collaboration!

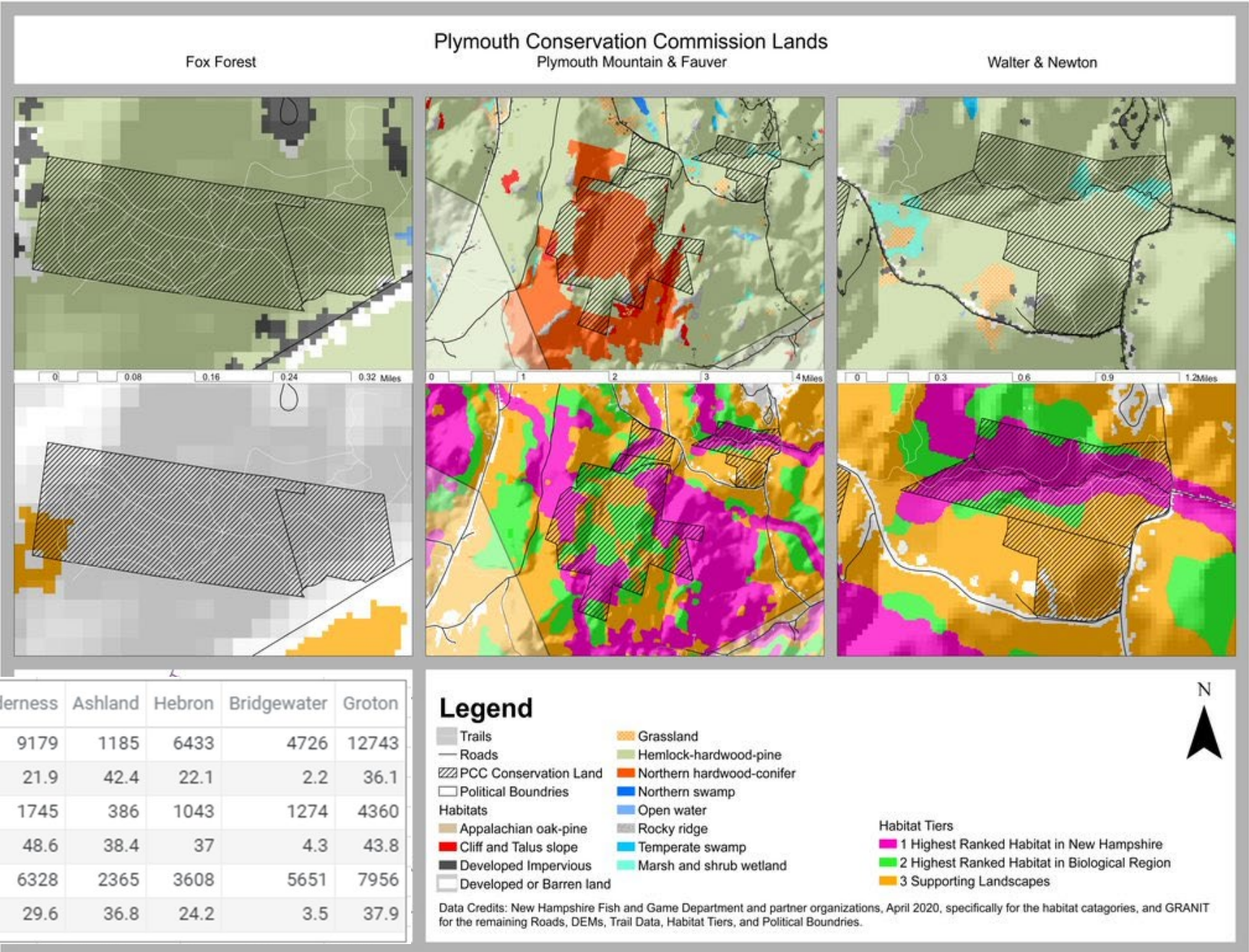
<https://pccnh-plymouth-nh.hub.arcgis.com/pages/projects>

Natural Resource Inventory Wildlife Section

GIS Analysis & Report Writing



Comparative assessment of Town Conservation Areas



		Plymouth	Greater Plymouth Area
	Total Acres	18,233	143,521
Appalachian-oak-pine forest	Acres	1007.9	2331.4
	Percent	5.53%	1.62%
Cliff and talus slopes	Acres	326.6	1544.3
	Percent	1.79%	1.08%
Floodplain forest	Acres	72.7	4630.3
	Percent	0.40%	0.21%
Grassland	Acres	1230.9	4074.2
	Percent	6.75%	2.28%
Hemlock-hardwood-pine forest	Acres	11150.4	295.1
	Percent	61.16%	50.32%
High-elevation spruce-fir forest	Acres	0	3268
	Percent	0%	0.4%
Lowland spruce-fir forest	Acres	0	722
	Percent	0%	0%
Northern hardwood-conifer forest	Acres	1474.1	
	Percent	8.09%	
Northern swamp	Acres	33.2	
	Percent	0.18%	
Open water	Acres	282.2	
	Percent	1.55%	
Peatland	Acres	61.8	
	Percent	0.34%	

Compared
wildlife habitat
availability and
conservation
within and
across adjacent
towns

Trails Assessment

Experience, Research, Synthesis & Critical Thinking

Trail Scorecard Example

PLYMOUTH TRAILS SCORECARD

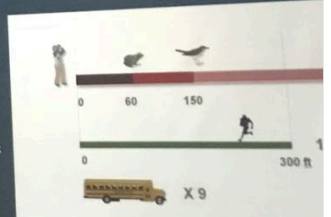
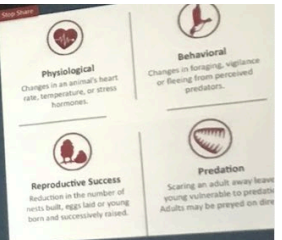
19 APRIL 2022 DRAFT

Source	Date	Scorecard Parameter	"GO"	"PROCEED WITH CAUTION"	"STOP"
TRPW	GIS	Avoid Steep Slopes (1)	(3 points) No impact no steep slopes	(2 points) One steep slope	(1 point) 2+ steep slopes
TRPW	GIS	Route Trails Along Habitat Edges (2)	(3 points) No impact no habitat edges	(2 points) One habitat edge	(1 point) 2+ habitat edges
TRPW	GIS	Avoid Special Habitat Types (3)	(3 points) No impact no special habitat	(2 points) One special habitat	(1 point) 2+ special habitats
TRPW	Field	Avoid Known Locations of Rare Species (4)	(3 points) No impact no rare species	(2 points) Located a rare species	(1 point) 2+ rare species
TRPW	GIS	Route Trails Away from Wet Areas (5)	(3 points) No impact no wet areas	(2 points) Trail is near (<40 ft) of wet areas	(1 point) Trail is within 40 ft of wet areas
PCCP	GIS-Field	Cultural Features (6)	(3 points) No impact/no near any cultural features	(2 points) Trail is near cultural features but poses no threat	(1 point) Trail poses a high risk to cultural features
PCCP	Field	Litter (7)	(3 points) No impact no litter	(2 points) One 2-gallon bag of litter	(1 point) Multiple 2-gallon bags of litter
PCCP	GIS-Field	Trail Erosion (8)	(3 points) No impact no trail erosion	(2 points) Low impact of trail erosion	(1 point) High impact of trail erosion

Rationale

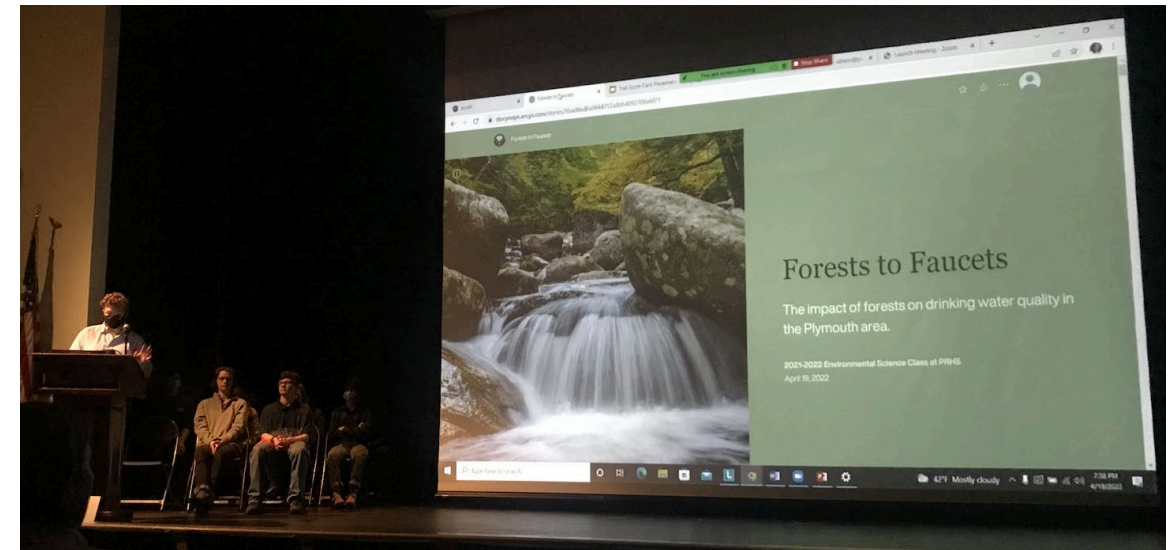
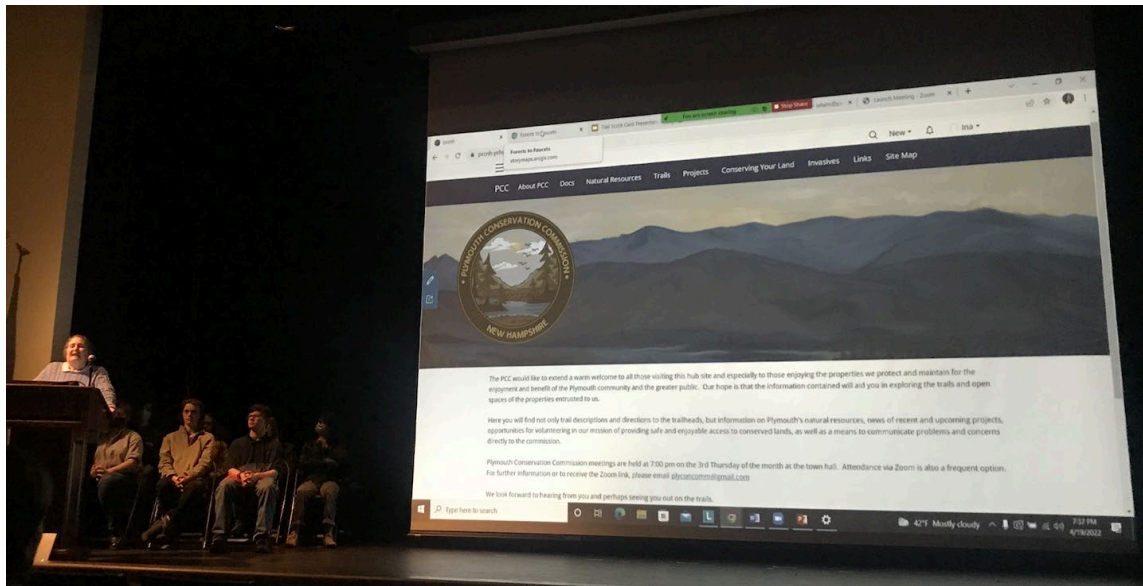
- Recreational disturbances from trails can affect wildlife in many ways
- A trail's corridor of influence is the distance away from wildlife to protect species in every direction
 - birds become alert at 150 feet on either side of a trail
 - mammals become alert at an average of 400 feet

PCC Goal: implement a framework and scorecard approach to evaluate existing trails and siting new trails that adhere to these principles.



Watershed Perspectives

GIS Data Management and Online Communication



Environmental Science Final Projects
Plymouth Regional High School



**TAKING ACTION
FOR WILDLIFE**

The End...

is just a Beginning

“The commitment and enthusiasm of the two groups of students exceeded expectations and resulted in successfully reaching the goals of both projects, while demonstrating the power of community engagement and collaboration, and engaging the next generation of stewards. Other NH communities can consider the benefits of engaging with students at local colleges to assist with their conservation work.”

For more information, check out the NEW HUB [HTTPS://arcg.is/plyconcomm2](https://arcg.is/plyconcomm2)

And don't forget the old one!
[HTTPS://arcg.is/plyconcomm](https://arcg.is/plyconcomm)