



Lights, Camera, Action!

Using Wildlife Cameras for Conservation

NHACC Annual Meeting
November 5, 2022

Pete Steckler



**Northeast
Conservation
Services**



Outline

- Why use Wildlife Cameras?
 - For Wildlife Crossings
 - For Land Protection
 - Supporting the Protection of Wildlife Corridors
- Wildlife Cameras: the basics
 - Equipment
 - Settings
 - Setup
- Questions/Discussion (ASK ALONG THE WAY!)







Ⓜ TNC-007 30.08 In→ 33°F



11-09-2020 22:02:45



Ⓜ TNC-007 29.56 In↓ 35°F



11-16-2020 15:14:20



Ⓜ TNC-007 29.81In→ 73°F



05-08-2021 12:17:41



Ⓜ TNC-007 30.13 In ↑ 51°F



08-27-2021 06:21:24



© TNC-007 29.711n↓ 70°F



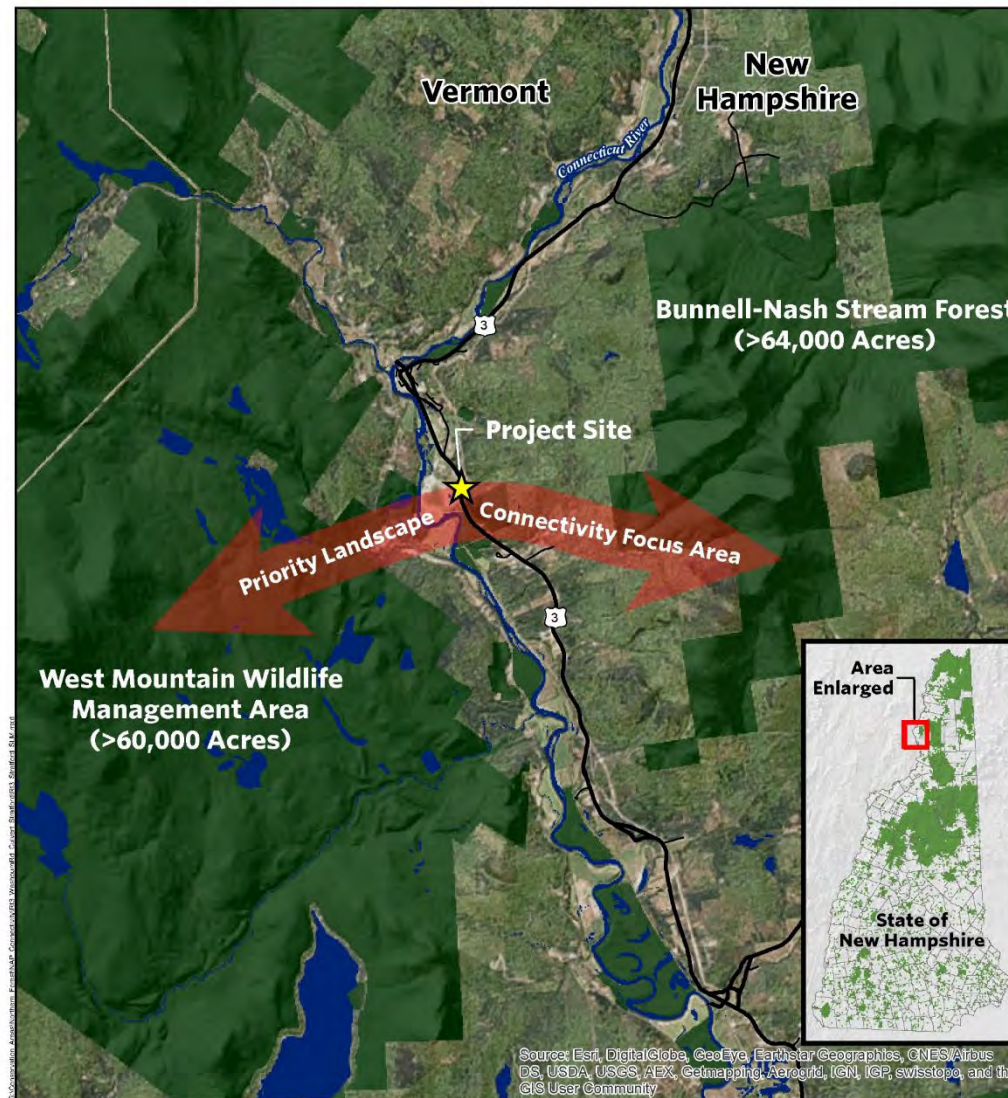
09-06-2021 14:11:03



Ⓜ TNC-007 30.341n↑ 59°F



08-16-2022 07:54:27

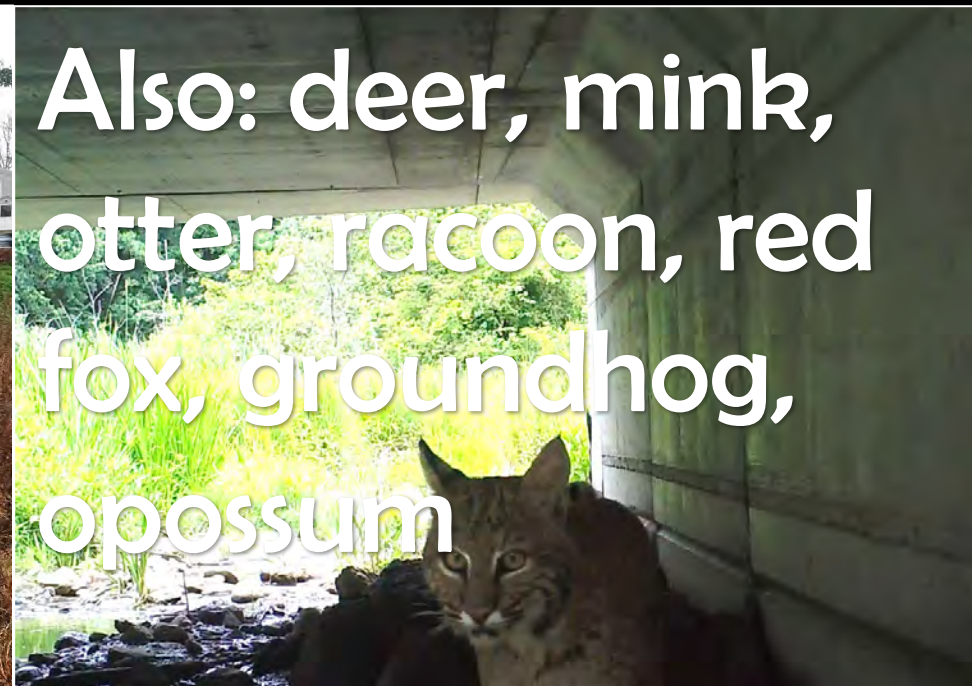


Before



After

Also: deer, mink,
otter, raccoon, red
fox, groundhog,
opossum







Wildlife Camera Studies in Vermont



Bearly Squeezing

2013

HC60



51°F

51°F



Ⓜ TNC-025 29.45In→ 68°F



08-10-2015 18:36:36



TNC-025 29.45In→ 68°F

09-02-2015 18:00:37



TNC-025 29.45In→ 68°F

08-10-2015 18:36:33



TNC-025 29.45In→ 68°F

08-10-2015 18:36:36



TNC-025 29.63In↓ 62°F

07-24-2016 10:50:02



TNC-025 29.37In→ 50°F

10-18-2016 16:52:05



TNC-025 29.37In→ 50°F

10-18-2016 16:52:29



TNC-025 29.45In↓ 59°F

06-23-2016 12:11:44



TNC-025 29.39In→ 59°F

05-11-2015 16:56:54



TNC-025 29.40In→ 64°F

05-30-2015 22:06:01



MaineDOT

Large Culverts w/ Fencing: 48" round culvert

2014-10-03 6:49:12 AM

M 1/3

26°F



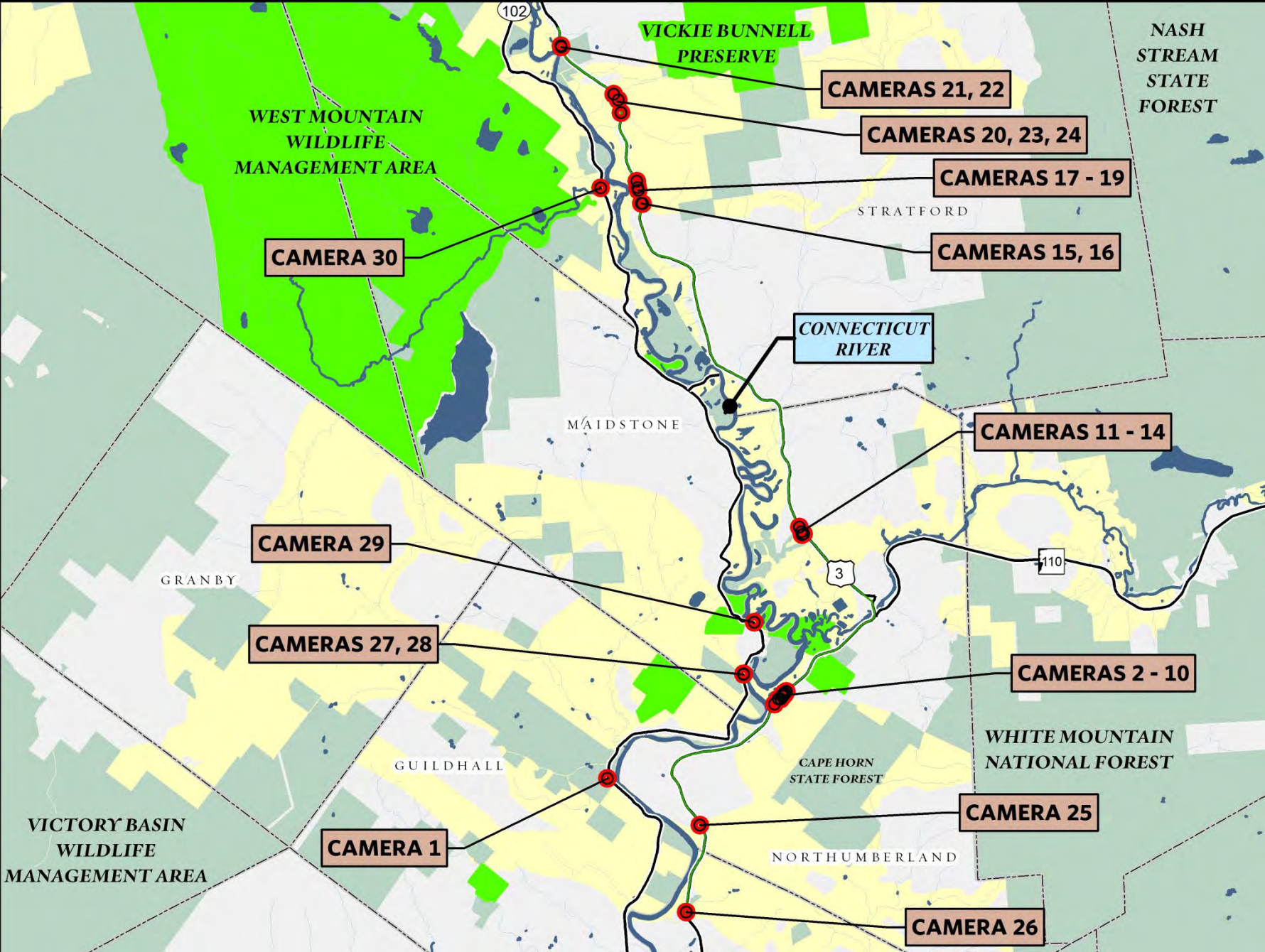
HC600 HYPERFIRE

RECONYX

Summation of Wildlife Passage at Road Crossings

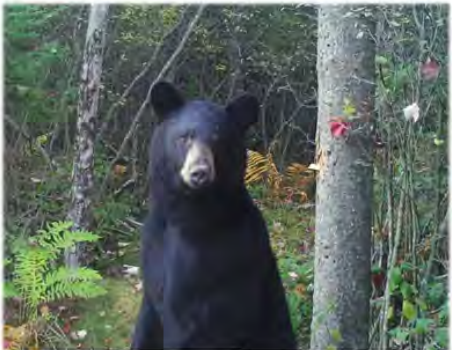
Thanks to Wildlife Cameras

Size Class	Structure	Species
Small underpass	Pipe, box, and arch culverts; 3-6' wide and < 8' height	Mink, otter, long-tailed weasel, groundhog, raccoon, skunk, fox, fisher, bobcat, coyote, black bear, Canada lynx, pine marten
Medium underpass	Larger culverts between 5' and 8' width and >8' height	SAME AS ABOVE + <u>deer</u>
Large underpass	Bridge spans, large culverts > 10' wide, > 8' high	SAME AS ABOVE + <u>moose</u>



Camera Trapping to Advance Wildlife Connectivity Implementation in Coos County, NH

A report to the SCC Conservation Grant Program



April 22, 2016

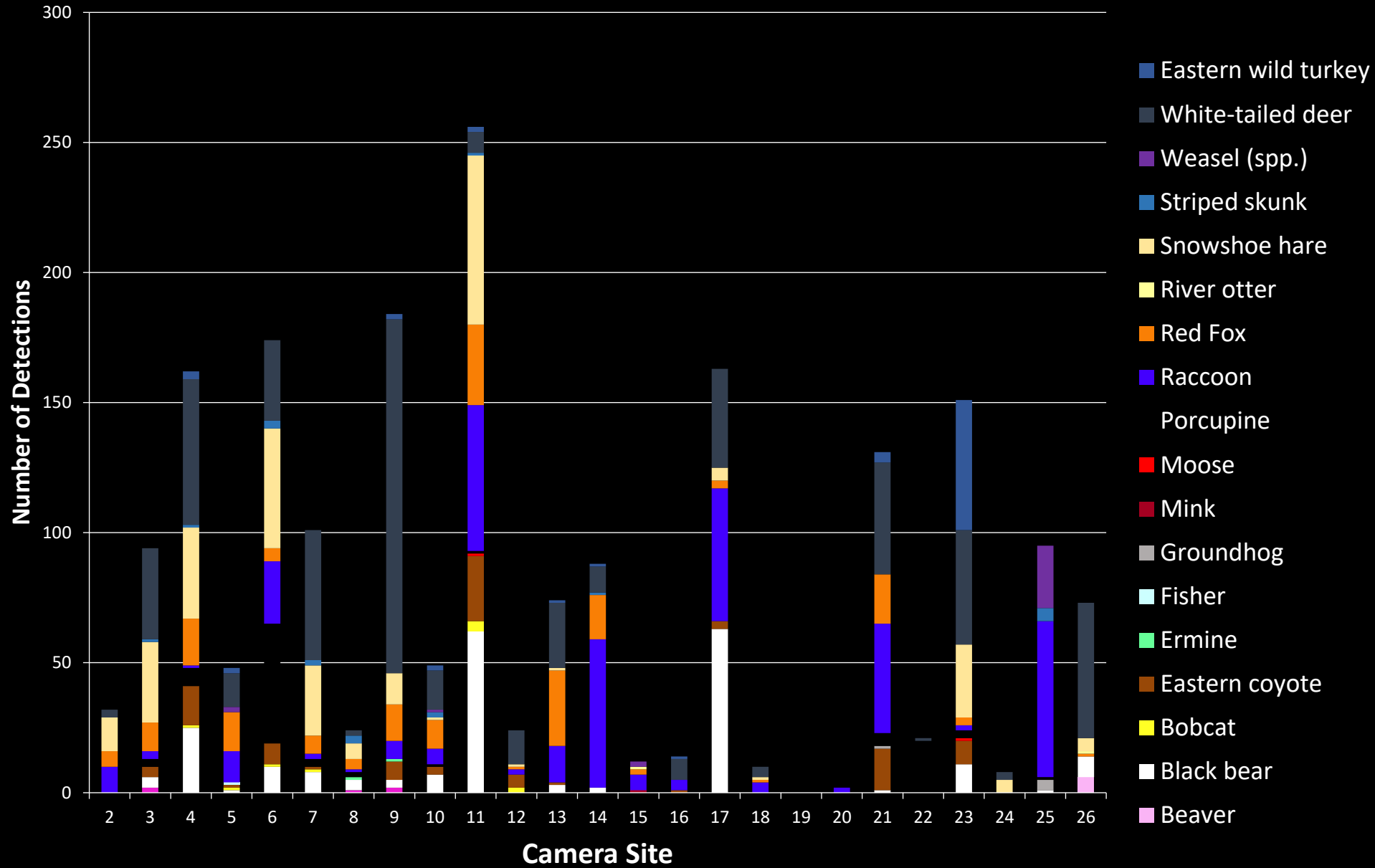
Conducted by:

Peter Steckler, The Nature Conservancy, NH Chapter
Arianna Spear & Timothy Norton, University of New Hampshire Interns



This project is supported by funds from the sale of the Conservation License Plate (Moose Plate) through the NH State Conservation Committee grant program.

Species Detections by Site



Understanding Wildlife Corridors



Wildlife Camera Equipment Basics

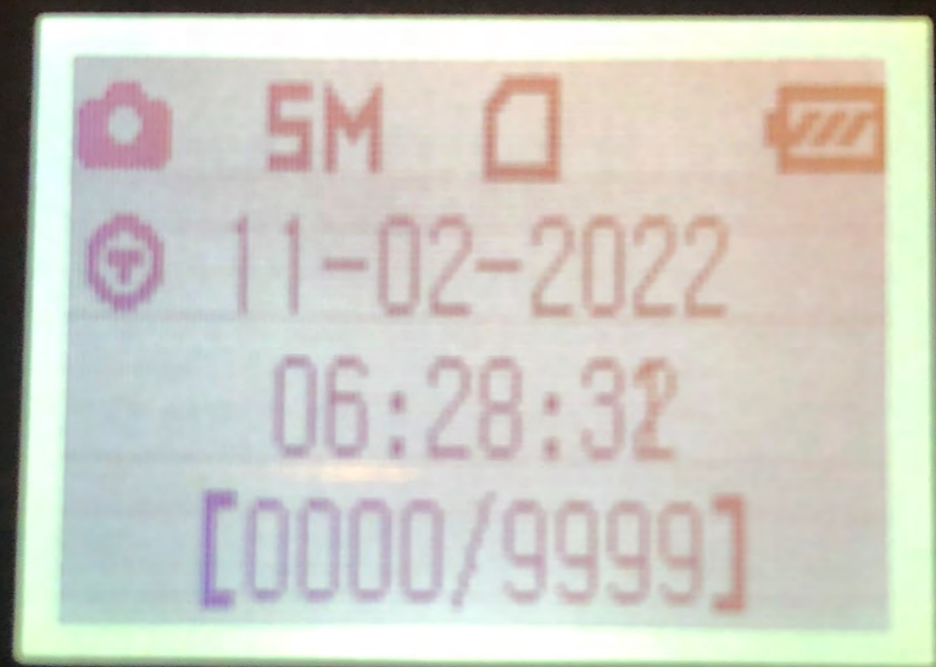
- Camera
- Lock Box
- Cable Lock (+ keys!)
- SD Card (2)
- Batteries (Lithium)
- Fastening hardware
 - Lag bolts + drill with bit
 - Strap (caution!)
- Equipment bag with WD-40, bolt cutters, hatchet/ loppers/machete, SD Card reader



Wildlife Camera Basics

SETTINGS





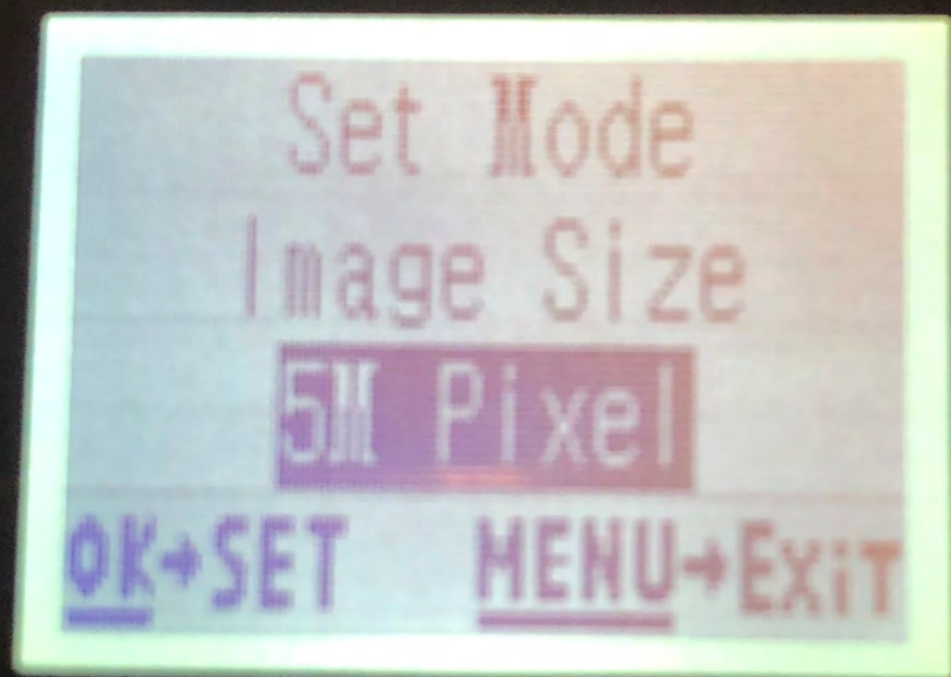
Bushnell



Bushnell



Bushnell



Bushnell

Set Mode

Capture Number

2 Photo

OK+SET

MENU+EXIT

Bushnell

Set Mode
LED Control
High
OK→SET MENU→EXIT

Bushnell

Set Mode
Camera Name
Input

OK→SET

MENU→EXIT

Bushnell

Set Mode
Video Size

1280x720

OK+SET MENU+Exit

Bushnell



Bushnell

Set Mode
Interval

1S

OK+SET

MENU→EXIT

Bushnell

Set Mode
Sensor Level
Auto

OK→SET MENU→Exit

Bushnell

Set Mode
NV Shutter

High

OK+SET

MENU+EXIT

Bushnell

Set Mode
Camera Mode
24hrs

OK→SET MENU→EXIT

Bushnell

Set Mode

Format

Execute

OK+SET

MENU+EXIT

Bushnell

Set Mode
Time Stamp

On

OK+SET

MENU+EXIT

Bushnell

Set Mode
Set Clock

Set

OK+SET

MENU→EXIT

Bushnell

Set Mode
Field Scan
Off

OK→SET

MENU→EXIT

Bushnell

Set Mode
Coordinate Input

Off

OK+SET

MENU+EXIT

Bushnell

Set Mode
Video Sound

On

OK+SET

MENU+EXIT

Bushnell

Wildlife Camera Basics

SETUP

What are your data
collection goals?



Approach

- Site Identification
 - Site Diversity
- Site Permissions
- Constraints:
 - Mounts, vegetation, false trigger management, theft avoidance
- Photo Cataloging
 - File Name, Date, Time, Air Pressure, Temperature (Fahrenheit), Moon Phase, Species (Common Name), Confidence, Number of Animals, Direction of Movement, Weather, Cataloger Name, Comments

Camera Trapping to Advance Wildlife Connectivity Implementation in Coos County, NH

A report to the SCC Conservation Grant Program



TNC-011 29741n→ 24F 10-05-2015 06:58:31

April 22, 2016

Conducted by:

Peter Steckler, The Nature Conservancy, NH Chapter
Arianna Spear & Timothy Norton, University of New Hampshire Interns



This project is supported by funds from the sale of the Conservation License Plate (Moose Plate) through the NH State Conservation Committee grant program.

Learning as you go



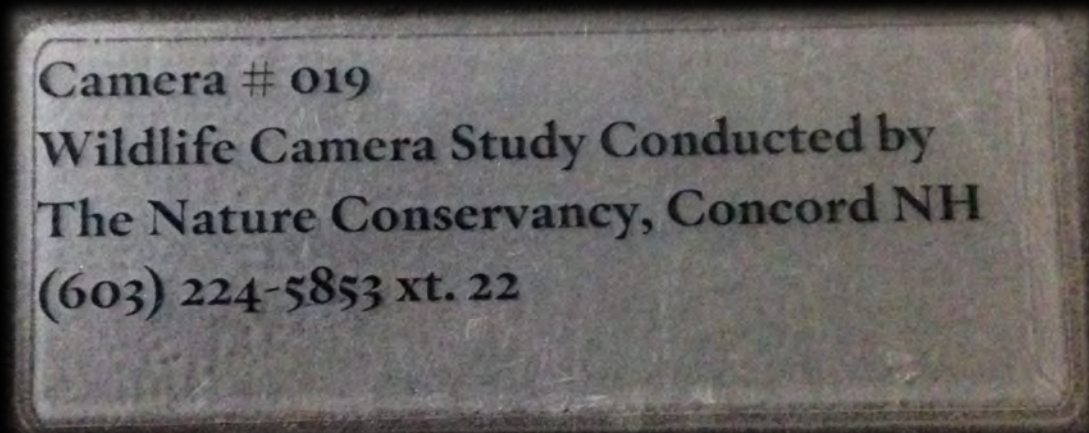
Wildlife Cameras: Lessons Learned! (1)

Label your equipment!

- Camera number on each:

- Camera
- Lockbox
- SD card
- Key

- Your contact information



Wildlife Cameras: Lessons Learned! (2)

- Camera setup – take your time and to get the shot you want!



Ⓜ TNC-015 29.08 In → 82°F



07-20-2017 14:02:14

Wildlife Cameras: Lessons Learned! (3)

- Where to setup?
- Camera settings
 - Sensitivity (false triggers)
 - Flash (under/over exposure)
- Challenges



Wildlife Cameras: Lessons Learn! (4)

○ Data Processing

File Name	Date	Time	Pressure	Temp	Moon	Species	Confidence	# of Animals	Direction	Weather	Cataloger	Comment
04010115	04/01/15	9:21	29.06		35 Gibbous	gray squirrel	Confident	1	SE		Tim	
04010117	04/01/15	20:56	29.09		15 Gibbous	coyote	Moderate	1	NW		Tim/Pete	
04020123	04/02/15	6:49	29.1		3 Gibbous	gray squirrel	Confident	1	SE		Tim	
04040132	04/04/15	3:00	28.52		30 Full	snowshoe hare	Confident	1	NW		Tim	
04040135	04/04/15	6:13	28.49		32 Full	snowshoe hare	Confident	1	NW		Tim	
04050141	04/05/15	8:15	28.92		21 Gibbous	gray squirrel	Confident	1	SE		Tim	
04060148	04/06/15	0:51	29.16		15 Gibbous	red fox	Confident	1	SW		Tim/Arianna	
04070151	04/07/15	3:17	29.16		26 Gibbous	snowshoe hare	Confident	1	NW		Tim	
04070157	04/07/15	11:59	29.32		48 Gibbous	gray squirrel	Confident	1	NW		Tim	
04080160	04/08/15	7:12	29.4		15 Half	gray squirrel	Confident	1	S		Tim	
04090175	04/09/15	5:40	29.3		21 Half	bobcat	Confident	1	W		Tim/Pete	
04100178	04/10/15	6:41	28.91		30 Half	gray squirrel	Confident	1	NW		Tim	
04110181	04/11/15	13:16	28.82		33 Crescent	gray squirrel	Confident	1	NW		Tim	
04120187	04/12/15	7:33	29.14		24 Crescent	gray squirrel	Confident	1	NW		Tim	
04120190	04/12/15	8:15	29.23		39 Crescent	gray squirrel	Confident	1	NW		Tim	
04130196	04/13/15	2:08	29.2		21 Crescent	raccoon	Confident	1	E		Tim	
04130202	04/13/15	3:05	29.21		21 Crescent	snowshoe hare	Confident	1	NW		Tim	

Thank You!

Pete Steckler

psteckler@neconservation.com

www.neconservation.com



**Northeast
Conservation
Services**



Ⓜ NHFO-027 28.90In→ 15°F



04-06-2016 01:03:59