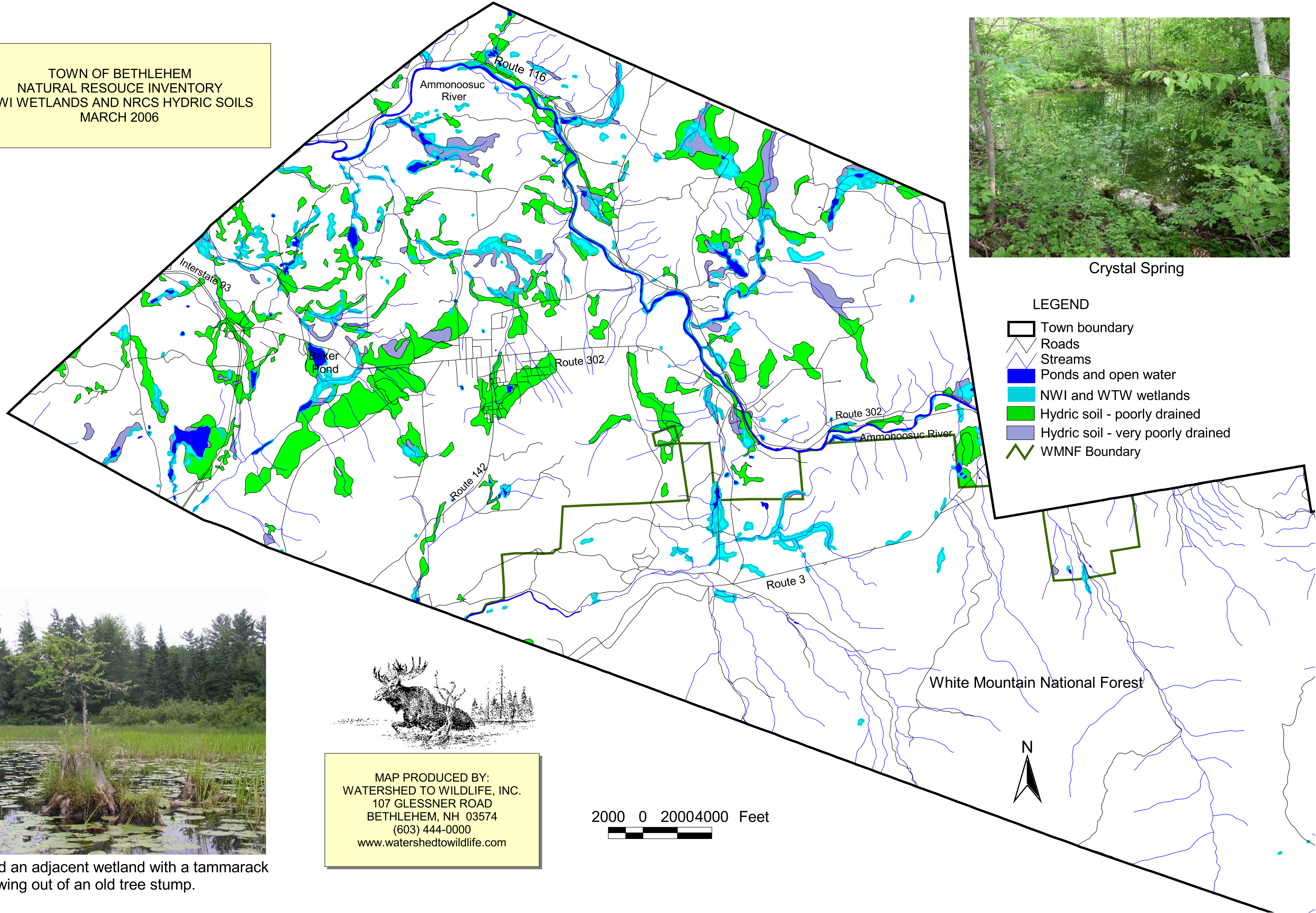


TOWN OF BETHLEHEM
 NATURAL RESOURCE INVENTORY
 NWI WETLANDS AND NRCS HYDRIC SOILS
 MARCH 2006



Crystal Spring

- LEGEND
- Town boundary
 - Roads
 - Streams
 - Ponds and open water
 - NWI and WTW wetlands
 - Hydric soil - poorly drained
 - Hydric soil - very poorly drained
 - WMNF Boundary



Baker Pond and an adjacent wetland with a tamarack growing out of an old tree stump.



MAP PRODUCED BY:
 WATERSHED TO WILDLIFE, INC.
 107 GLESSNER ROAD
 BETHLEHEM, NH 03574
 (603) 444-0000
 www.watershedtowildlife.com

